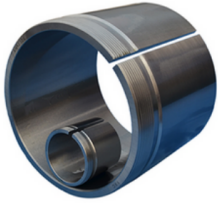


AHX2 SERIES



dimensions			Lock nut Appropriate bearing(s) (kg)			
G Thread	d	d1	B1	Lock nut	Appropriate bearing(s)	(kg)
M200X3	190	180	73	KM40	-	2.94
Tr210X4	200	190	77	HM42	-	3.12
Tr230X4	220	200	85	HM46	-	6.1
Tr260X4	240	220	96	HM52	-	8.16
Tr280X4	260	240	105	HM56	-	9.89
Tr300X4	280	260	105	HM60	-	10.4