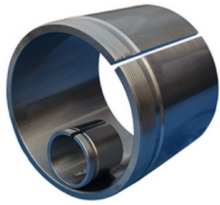


AH30 SERIES



G Thread	dimensions			Lock nut	Appropriate bearing(s)	(kg)
	d	d1	B1	Lock nut	Appropriate bearing(s)	(kg)
M 130x2	120	115	60	KML26	23024K	0.73
M 140x2	130	125	67	KML28	23026K	0.91
M 150x2	140	135	68	KML30	23028K	1
M160x3	150	145	72	KML32	23030K	1.15
M170x3	160	150	77	KML34	23032K	2.05
M180x3	170	160	85	KML36	23034K	2.45
M190x3	180	170	92	KML38	23036K	2.8
Tr560x6	530	500	230	HMU560	230/530K	63.5
Tr600x6	560	530	240	HMU600	230/560K	73.5
Tr630x6	600	570	245	HMU630	230/600K	77
Tr670x6	630	600	258	HMU670	230/630K	89.5
Tr710x7	670	630	280	HMU710	230/670K	127
Tr750x7	710	670	286	HMU750	230/71 OK	138
Tr800x7	750	710	300	HMU800	230/750K	159
Tr850x7	800	750	308	HMU850	230/800K	204
Tr900x7	850	800	325	HMU900	230/850K	230
Tr950x8	900	850	335	HMU950	230/900K	253
Tr1000x8	950	900	355	HMU1000	230/950K	285
Tr1060x8	1000	950	365	HMU1060	230/1000K	318
Tr1120x8	1060	1000	385	HMU1120	230/1060K	406