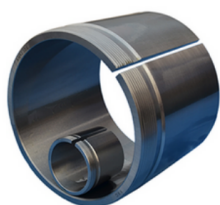


AHX30 SERIES



dimensions			Lock nut	Appropriate bearing(s)	(kg)	
G Thread	d	d1	B1	Lock nut	Appropriate bearing(s)	(kg)
M200x3	190	180	96	KML40	23038K	3.3
Tr210x4	200	190	102	HM42	23040K	3.7
Tr230x4	220	200	111	HM46	23044K	7.3
Tr260x4	240	220	116	HML52	23048K	7.95
Tr280x4	260	240	128	HML56	23052K	9.6
Tr300x4	280	260	131	HML60	23056K	11
Tr320x5	300	280	145	HML64	23060K	13
Tr340x5	320	300	149	HML68	23064K	16.5
Tr360x5	340	320	162	HML72	23068K	19
Tr380x5	360	340	167	HML76	23072K	21
Tr400x5	380	360	170	HML80	23076K	23
Tr420x5	400	380	183	HML84	23080K	26
Tr440x5	420	400	186	HML88	23084K	28
Tr460x5	440	420	194	HML92	23088K	30.8
Tr480x5	460	440	202	HML96	23092K	33.8
Tr500x5	480	460	205	HMU500	23096K	36
Tr530x6	500	480	209	HMU530	230/500K	41