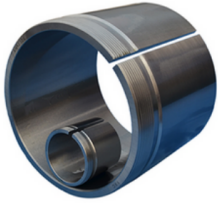


AH3 SERIES



| G Thread | dimensions | | B1 | Lock nut | Appropriate bearing(s) | (kg) |
|----------|------------|-----|----|----------|------------------------------|-------|
| | d | d1 | | Lock nut | Appropriate bearing(s) | (kg) |
| M45X1.5 | 40 | 35 | 29 | KM09 | 1308K□ 2208K□ 21308K. 22208K | 0.09 |
| M50X1.5 | 45 | 40 | 31 | KM10 | 1309K, 2209K. 21309K. 22209K | 0.12 |
| M55X2 | 50 | 45 | 35 | KM 11 | 1310K, 2210K□ 21310K. 22210K | 0.13 |
| M60X2 | 55 | 50 | 37 | KM 12 | 1311K, 2211K, 21311K, 22211K | 0.16 |
| M65X2 | 60 | 55 | 40 | KM 13 | 1312K. 2212K□ 21312K. 22212K | 0.19 |
| M90X2 | 80 | 75 | 48 | KM 18 | 1316K, 2216K. 21316K. 22216K | 0.37 |
| M95X2 | 85 | 80 | 52 | KM 19 | 1317K. 2217K□ 21317K. 22217K | 0.43 |
| M100X2 | 90 | 85 | 53 | KM20 | 1318K, 2218K. 21318K. 22218K | 0.46 |
| M105X2 | 95 | 90 | 57 | KM21 | 1319K. 2219K□ 21319K. 22219K | 0.54 |
| M110X2 | 100 | 95 | 59 | KM22 | 1320K, 2220K. 21320K. 22220K | 0.58 |
| M120X2 | 110 | 105 | 63 | KM24 | 1322K□ 21322K | 0.77 |
| M130X2 | 120 | 115 | 69 | KM26 | - | 0.875 |
| M140X2 | 130 | 125 | 74 | KM28 | - | 1.03 |
| M150X2 | 140 | 135 | 77 | KM30 | - | 1.15 |