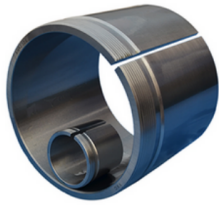


AH31 SERIES



dimensions			Lock nut	Appropriate bearing(s)	(kg)	
G Thread	d	d1	B1	Lock nut	Appropriate bearing(s)	(kg)
M110x2	100	95	64	KM22	23120K	0.66
M120x2	110	105	68	KM24	2222K, 23122K, 22222K	0.76
M 130x2	120	115	75	KM26	23124K, 22224K	0.94
M 140x2	130	125	78	KM28	23126K, 22226K	1.1
M150x2	140	135	83	KM30	23128K □ 22228K	1.3
Tr220x4	200	190	134	HM44	23140K	5.65
Tr240x4	220	200	145	HM48	23144K	9.3
Tr260x4	240	220	154	HM52	23148K	12