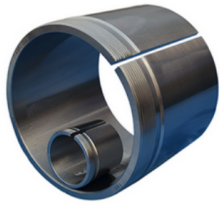


AHX31 SERIES



G Thread	dimensions			Lock nut	Appropriate bearing(s)	(kg)
	d	d1	B1	Lock nut	Appropriate bearing(s)	(kg)
M 160x3	150	145	96	KM32	23130K, 22230K	1.7
M170x3	160	150	103	KM34	23132K, 22232K	3
M 180x3	170	160	104	KM36	23134K □ 22234K	3.2
M190x3	180	170	116	KM38	23136K	3.9
M200x3	190	180	125	KM40	23138K	4.5
Tr280x4	260	240	172	HM56	23152K	15.5
Tr300x4	280	260	175	HM60	23156K	17
Tr320x5	300	280	192	HM64	23160K	20.5
Tr340x5	320	300	209	HM68	23164K	24.5
Tr360x5	340	320	225	HM72	23168K	28
Tr380x5	360	340	229	HM76	23172K	30.5
Tr400x5	380	360	232	HM80	23176K	33
Tr420x5	400	380	240	HM84	23180K	36
Tr440x5	420	400	266	HM88	23184K	43
Tr460x5	440	420	270	HM92	23188K	46
Tr480x5	460	440	285	HM96	23192K	51.5
Tr500x5	480	460	295	HM/500	23196K	56
Tr530x6	500	480	313	HM/530	231/500K	66.5
Tr560x6	530	500	325	HM/560	231/530K	94.5
Tr600x6	560	530	335	HM/600	231/560K	108
Tr630x6	600	570	355	HM/630	231/600K	120
Tr670x6	630	600	375	HM/670	231/630K	140
Tr710x7	670	630	395	HM/710	231/670K	189

AHX31 SERIES

Tr750x7	710	670	405	HM/750	231/710K	207
Tr800x7	750	710	425	HM/800	231/750K	238
Tr850x7	800	750	438	HM/850	231/800K	305
Tr900x7	850	800	462	HM/900	231/850K	345
Tr950x8	900	850	475	HM/950	231/900K	379
Tr1000x8	950	900	500	HM/1000	231/950K	426
Tr1060x8	1000	950	525	HM/1060	231/1000K	485