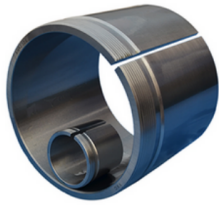


AH23 SERIES



G Thread	dimensions		B1	Lock nut	Appropriate bearing(s)	(kg)
	d	d1		Lock nut	Appropriate bearing(s)	(kg)
M45x1.5	40	35	40	KM09	2308K, 22308K	0.13
M50x1.5	45	40	44	KMIO	2309K□ 22309K	0.16
M55x2	50	45	50	KM 11	2310K. 22310K	0.19
M60x2	55	50	54	KM 12	2311K, 22311K	0.26
M65x2	60	55	58	KM 13	2312K□ 22312K	0.3
M95x2	85	80	74	KM 19	2317K□ 22317K	0.65
M 100x2	90	85	79	KM20	2318K, 22318K	0.76
M 105x2	95	90	85	KM21	2319K□ 22319K	0.9
M110x2	100	95	90	KM22	2320K, 22320K	1
Tr220x4	200	190	170	HM44	22340K	7.6
Tr240x4	220	200	181	HM48	22344K. 23244K	13.5
Tr260x4	240	220	189	HM52	22348K□ 23248K	14