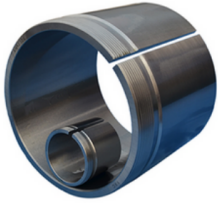


AHX23 SERIES



dimensions			Lock nut Appropriate bearing(s) (kg)			
G Thread	d	d1	B1	Lock nut	Appropriate bearing(s)	(kg)
M70x2	65	60	61	KM 14	2313K □ 22313K	0.36
M75x2	70	65	64	KM 15	2314K □ 22314K	0.42
M80x2	75	70	68	KM 16	2315K □ 22315K	0.48
M90x2	80	75	71	KM 18	2316K, 22316K	0.57
M120x2	110	105	98	KM24	2322K □ 22322K	1.28
M130x2	120	115	105	KM26	22324K	1.53
M 140x2	130	125	115	KM28	22326K	1.9
M 150x2	140	135	125	KM30	22328K	2.25
M 160x3	150	145	135	KM32	22330K	3.7
M 170x3	160	150	140	KM34	22332K	4.3
M 180x3	170	160	146	KM36	22334K	4.85
M 190x3	180	170	154	KM38	22336K	5.5
M200X3	190	180	160	KM40	22338K	6.1
Tr280x4	260	240	205	HM56	22352K, 23252K	19
Tr300x4	280	260	212	HM60	22356K, 23256K	21.5