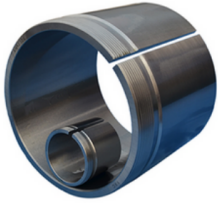


## AH32 SERIES

---



G Thread	dimensions		B1	Lock nut	Appropriate bearing(s)	(kg)
	d	d1		Lock nut	Appropriate bearing(s)	(kg)
M100x2	90	85	63	KM20	23218K	0.576
M105x2	95	90	67	KM21	23219K	0.68
M 110x2	100	95	73	KM22	23220K	0.76
Tr220x4	200	190	153	HM44	23240K	6.6