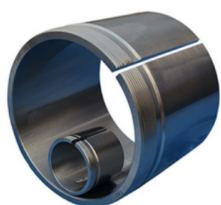


AHX32 SERIES



G Thread	dimensions		B1	Lock nut Appropriate bearing(s) (kg)		
	d	d1		Lock nut	Appropriate bearing(s) (kg)	
M 120×2	110	105	82	KM24	23222K	1
M 130×2	120	115	90	KM26	23224K	1.22
M 140×2	130	125	98	KM28	23226K	1.5
M 150×2	140	135	104	KM30	23228K	1.8
M 160×3	150	145	114	KM32	23230K	2.1
M 170×3	160	150	124	KM34	23232K	3.7
M 180×3	170	160	134	KM36	23234K	4.35
M 190×3	180	170	140	KM38	23236K	4.85
M 200×3	190	180	145	KM40	23238K	5.4
Tr 320×5	300	280	228	HM64	23260K	23.5
Tr 340×5	320	300	246	HM68	23264K	27.5
Tr 360×5	340	320	264	HM72	23268K	32
Tr 380×5	360	340	274	HM76	23272K	35.5
Tr 400×5	380	360	284	HM80	23276K	42
Tr 420×5	400	380	302	HM84	23280K	48
Tr 440×5	420	400	321	HM88	23284K	54.5
Tr 460×5	440	420	330	HM92	23288K	59
Tr 480×5	460	440	349	HM96	23292K	66.5
Tr 500×5	480	460	364	HM/500	23296K	73.5
Tr 530×6	500	480	393	HM/530	232/500K	89.5
Tr 560×6	530	500	412	HM/560	232/530K	127
Tr 600×6	560	530	422	HM/600	232/560K	143
Tr 630×6	600	570	445	HM/630	232/600K	159

AHX32 SERIES

Tr 670×6	630	600	475	HM/670	232/630K	188
Tr 710×7	670	630	500	HM/710	232/670K	252
Tr 750×7	710	670	515	HM/750	232/710K	278
Tr 800×7	750	710	540	HM/800	232/750K	320
Tr 850×7	800	750	550	HM/850	232/800K	401
Tr 900×7	850	800	585	HM/900	232/850K	461
Tr 950×8	900	850	585	HM/950	232/900K	489