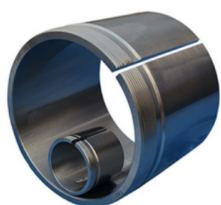


## AH39 SERIES



G Thread	dimensions			Lock nut	Appropriate bearing(s)	(kg)
	d	d1	B1	Lock nut	Appropriate bearing(s)	(kg)
M180x3	170	160	59	KML36	23934K	1.59
M190x3	180	170	66	KML38	23936K	1.91
M200x3	190	180	66	KML40	23938K	2.02
Tr210x4	200	190	77	HM42	23940K	2.62
Tr230x4	220	200	77	HM46	23944K	4.83
Tr250x4	240	220	77	HM50	23948K	5.29
Tr280x4	260	240	94	HML56	23952K	7.36
Tr300x4	280	260	94	HML60	23956K	8.02
Tr320x5	300	280	112	HML64	23960K	10.5
Tr340x5	320	300	112	HML68	23964K	11.2
Tr360x5	340	320	112	HML72	23968K	11.9
Tr380x5	360	340	112	HML76	23972K	12.6
Tr400x5	380	360	130	HML80	23976K	15.4
Tr420x5	400	380	130	HML84	23980K	16.6
Tr440x5	420	400	130	HML88	23984K	17.5
Tr460x5	440	420	145	HML92	23988K	21.5
Tr480x5	460	440	145	HML96	23992K	22.5
Tr500x5	480	460	158	HML/500	23996K	26
Tr530x6	500	480	162	HML/530	239/500K	28
Tr560x6	530	500	175	HML/560	239/530K	43.4
Tr600x6	560	530	180	HML/600	239/560K	47.4
Tr630x6	600	570	192	HML/630	239/600K	56.1
Tr670x6	630	600	210	HML/670	239/630K	62.8

### AH39 SERIES

Tr710x7	670	630	216	HML/710	239/670K	85.5
Tr750x7	710	670	228	HML/750	239/710K	102
Tr800x7	750	710	234	HML/800	239/750K	111
Tr850x7	800	750	245	HML/850	239/800K	147
Tr900x7	850	800	258	HML/900	239/850K	166
Tr950x8	900	850	265	HML/950	239/900K	182
Tr1000x8	950	900	282	HML/1000	239/950K	216