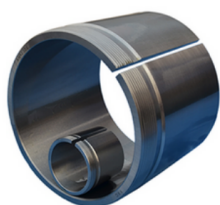


AH24 SERIES



dimensions			Lock nut Appropriate bearing(s) (kg)			
G Thread	d	d1	B1	Lock nut	Appropriate bearing(s)	(kg)
M125x2	120	115	73	KM25	24024K30	0.7
M135x2	130	125	83	KM27	24026K30	0.88
M145x2	140	135	83	KM29	24028K30	0.95
M155x3	150	145	90	KM31	24030K30	1.05
M170x3	160	150	95	KM34	24032K30	2.3
M180x3	170	160	106	KM36	24034K30	2.7
M190x3	180	170	116	KM38	24036K30	3.2
M200x3	190	180	118	KM40	24038K30	3.55
Tr210x4	200	190	127	HM42	24040K30	4
Tr230x4	220	200	138	HM46	24044K30	8.2
Tr250x4	240	220	138	HM50	24048K30	8.05
Tr280x4	260	240	162	HM56	24052K30	12.5
Tr300x4	280	260	162	HM60	24056K30	13.5
Tr320x5	300	280	184	HM64	24060K30	17
Tr340x5	320	300	184	HM68	24064K30	18
Tr360x5	340	320	206	HM72	24068K30	18
Tr380x5	360	340	206	HM76	24072K30	20
Tr400x5	380	360	208	HM80	24076K30	23.5
Tr420x5	400	380	228	HM84	24080K30	27
Tr440x5	420	400	230	HM88	24084K30	29
Tr460x5	440	420	242	HM92	24088K30	32
Tr480x5	460	440	250	HM96	24092K30	34.7
Tr500x5	480	460	250	HM/500	24096K30	36.6

AH24 SERIES

Tr530x6	500	480	253	HM/530	240/500K30	41.7
Tr560x6	530	500	285	HM/560	240/530K30	69.5
Tr600x6	560	530	296	HM/600	240/560K30	79.5
Tr630x6	600	570	310	HM/630	240/600K30	86.5
Tr670x6	630	600	330	HM/670	240/630K30	101
Tr710x7	670	630	348	HM/710	240/670K30	140
Tr750x7	710	670	360	HM/750	240/710K30	155